

PROPANE-EQUIPMENT



6001



6002



3501



3502



6010



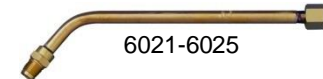
6011



6004



6003



6021-6025



6027-6029



6030

6031

6032

6033

6034



6040-6042

6001 **propane torch handle with incorporated gas saving lever**, for the reduction of gas flow during work intervals. Handy and solid construction, with regulating valve and handle in moulded shockproof material, connector 3/8"L

6002 **propane torch handle**, same as above, but without gas saving lever

6003 **soldering attachment** in drop forged brass support can be tilted backwards, holder for soldering iron

6000 **propane soldering torch complete** including handle 6002, soldering attachment 6003 and straight burner 6011 (without soldering iron)

soldering iron, 300g

3501 in copper, hammer shape

3502 in copper, pointed shape

6004 **rotating hose connector**

avoids twisting the hose and makes the operation easier

burner head, in brass, particularly suitable for soldering applications

6010 head Ø 14 mm, for precise flame, gas consumption 50g/h

6011 head Ø 19 mm, for precise flame, gas consumption 100 g/h

torch tubes bent 30°, in brass, to insert between handle and torch head

6021 length 50 mm

6022 length 100 mm

6023 length 200 mm

6024 length 400 mm

6025 length 600 mm

straight torch tubes, in brass, to insert between handle and torch head

6027 length 100 mm

6028 length 200 mm

6029 length 300 mm

6029-600 length 600 mm

Torch heads in steel, with nozzle, connecting thread G 1/4" internal (for various applications including heating, de-icing, asphalt processing, preheating workpieces etc):

6030 Ø 30 mm, gas consumption 300 g/h

6031 Ø 40 mm, gas consumption 700 g/h

6032 Ø 50 mm, gas consumption 1150 g/h

6033 Ø 60 mm, gas consumption 1750 g/h

6034 Ø 70 mm, gas consumption 2400 g/h

Torch heads with aspiration of air on the torch tube (special soft flame for the shrinking of plastic hoses)

6040 Ø 23 mm, gas consumption 120 g/h

6041 Ø 30 mm, gas consumption 300 g/h

6042 Ø 40 mm, gas consumption 700 g/h

GLOOR



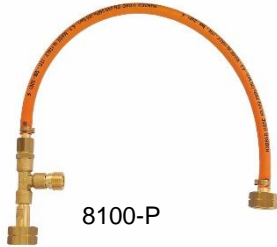
6090

6090 **propane soldering torch complete**, including wooden handle with adjustable air valve for setting an especially soft, small flame, rotating hose connector, support for soldering iron (soldering iron not included) and burner head, gas consumption 55 g/h



6100

6100 **decanting tube** in brass, for filling from larger to smaller propane cylinders
inlet thread: W 21,8 mm L (suited for industrial cylinders) , outlet thread: G 3/8" L



8100-P



8400-F

8400-F **low pressure manifold** in brass, with stop cocks, for the connection of two burners, including hose connectors

8100-P **cylinder coupling** for the simultaneous connection of two propane cylinders



6200

6200 **pressure regulator** with incorporated working pressure gauge for propane, compact and robust construction, working pressure 0 – 2 bar (0 – 4 bar available on request), suitable for applications with propane and oxygen, hose connector 3/8" L



6201

6201 **pressure regulator** for propane, solid and compact design, working pressure 0 – 4 bar, hose connector 3/8" L

6201-3/4L for cylinders with immersion tube



3052-G



3053-G

propane cylinders, painted red, incl. cylinder valve, outlet 3/8" L

3052-G small model with stand and carrying hook, capacity 420 g, dia. cylinder 85 mm, base 140 mm, height 360 mm, weight 2,85 kgs

3053-G larger model with stand and carrying hook, capacity 840 g, dia. 100 mm, height 430 mm, weight 4.35 kgs

6500 **industrial cooker for propane**, Ø 200 mm, height 250 mm, for melting lead and bitumen products, gas consumption 750 g/h



6500



7605

7605 **propane cylinder trolley**, for 11 kgs propane cylinder, solid rubber tyres diameter 200 x 50 mm, width 450 mm, painted blue, with torch support (for liquid or gas phase)

1006-P **propane hose**, orange colour, acc. standard EN 559/ ISO 3821